

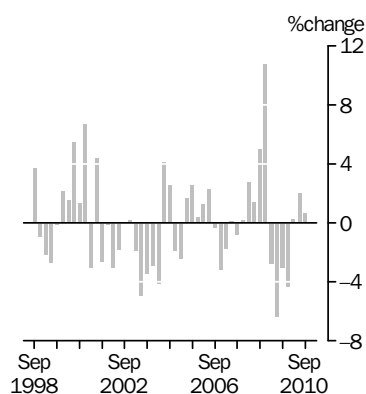
INTERNATIONAL TRADE PRICE INDEXES

AUSTRALIA

EMBARGO: 11.30AM (CANBERRA TIME) FRI 22 OCT 2010

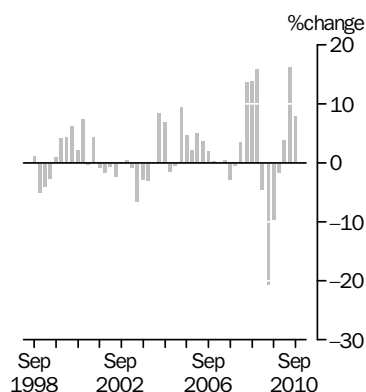
IMPORT PRICE INDEX: all groups

Quarterly % change



EXPORT PRICE INDEX: all groups

Quarterly % change



INQUIRIES

For further information about these and related statistics, contact the National Information and Referral Service on 1300 135 070.

KEY FIGURES

	<i>Jun Qtr 10 to Sep Qtr 10 % change</i>	<i>Sep Qtr 09 to Sep Qtr 10 % change</i>
Import Price Index all groups	0.7	-1.5
Food and live animals	-1.2	-1.7
Beverages and tobacco	0.1	-2.7
Crude materials, inedible, except fuels	-3.1	12.7
Mineral fuels, lubricants and related materials	-0.8	4.6
Animal and vegetable oils, fats and waxes	4.9	-14.0
Chemicals and related products, n.e.s.	1.4	-1.9
Manufactured goods classified chiefly by material	3.4	0.1
Machinery and transport equipment	0.5	-5.6
Miscellaneous manufactured articles	0.9	-5.2
Commodities and transactions, n.e.s.	0.5	19.3
Export Price Index all groups	7.8	27.7
Food and live animals	1.1	4.5
Beverages and tobacco	-2.3	-4.6
Crude materials, inedible, except fuels	13.2	61.6
Mineral fuels, lubricants and related materials	13.4	32.9
Animal and vegetable oils, fats and waxes	6.3	9.4
Chemicals and related products, n.e.s.	2.9	5.5
Manufactured goods classified chiefly by material	-0.9	10.9
Machinery and transport equipment	-1.0	-3.4
Miscellaneous manufactured articles	-4.2	-9.3
Commodities and transactions, n.e.s.	1.0	20.0

KEY POINTS

IMPORT PRICE INDEX

- The Import Price Index increased by 0.7% in the September quarter 2010. Through the year to September quarter 2010, the Import Price Index decreased by 1.5%.

EXPORT PRICE INDEX

- The Export Price Index increased by 7.8% in the September quarter 2010. Through the year to September quarter 2010, the Export Price Index increased by 27.7%.

NOTES

FORTHCOMING ISSUES

<i>ISSUE (Quarter)</i>	<i>RELEASE DATE</i>
December 2010	21 January 2011
March 2011	20 April 2011
June 2011	22 July 2011
September 2011	21 October 2011

CHANGES IN THIS ISSUE

Both the Import Price Index and the Export Price Index have been reweighted in the September quarter 2010. This is in line with the ABS policy of reweighting these indexes annually in the September quarter, as explained in paragraphs 8–10 of the Explanatory Notes. The new weighting patterns are provided as an Appendix to this issue. As a consequence of the annual reweighting, the points contribution data for June quarter 2010 shown in Tables 2, 8 and 17 differ from that published in the previous issue of this publication.

This issue incorporates revisions to a number of series in the Import Price Index back to September quarter 2009. These revisions are a result of a correction to an error in the underlying weights assigned in the 2009 annual reweight of the Import Price Index. At the All groups level this results in a 0.1% revision to June quarter 2010. The revised series are highlighted with revision annotations in the publication and with i-notes on the ABS website. The revised time series spreadsheets and data cubes for the September quarter 2009, December quarter 2009, March quarter 2010 and June quarter 2010 issues are also included in this release and can be downloaded from the ABS website <<http://www.abs.gov.au>>.

ROUNDING

Any discrepancies between totals and sums of components are due to rounding.

DATA REFERENCES

Data referenced in the Key Points and Commentary are available from the tables shown in this publication, or in the corresponding tables of this publication on the ABS website <<http://www.abs.gov.au>>.

ABBREVIATIONS

ABS	Australian Bureau of Statistics
ADP	automatic data processing
AHECC	Australian Harmonised Export Commodity Classification
ANZSIC	Australian and New Zealand Standard Industrial Classification
BEC	Classification by Broad Economic Categories
f.o.b.	free on board
HTISC	Harmonized Tariff Item Statistical Classification
IPD	implicit price deflator
n.e.c.	not elsewhere classified
n.e.s.	not elsewhere specified
SITC	Standard International Trade Classification

Brian Pink
Australian Statistician

COMMENTARY

IMPORT PRICE INDEX

The Import Price Index increased by 0.7% in the September quarter 2010. This increase was driven mainly by rises in the prices paid for iron and steel (+9.9%) and inorganic chemicals (+18.3%). Partly offsetting these rises were decreases in the prices paid for telecommunications and sound-recording and reproducing apparatus and equipment (-2.2%), and petroleum, petroleum products and related materials (-0.9%).

Through the year to September quarter 2010, the Import Price Index decreased by 1.5%. This decrease was driven mainly by falls in the prices paid for road vehicles (including air-cushioned vehicles) (-5.0%), telecommunication and sound recording and reproducing apparatus and equipment (-11.0%), office machines and automatic data-processing machines (-8.5%) and general industrial machinery and equipment, n.e.s., and machine parts, n.e.s. (-6.2%). Partly offsetting these through the year falls were increases in the prices paid for gold, non-monetary (excluding gold, ores and concentrates) (+19.3%).

EXPORT PRICE INDEX

The Export Price Index increased by 7.8% in the September quarter 2010. This increase was driven mainly by rises in the prices received for metalliferous ores and metal scrap (+14.6%), coal, coke and briquettes (+17.4%), gas, natural and manufactured (+15.6%), meat and meat preparations (+3.8%) and chemical materials and products, n.e.s. (+19.1%). These increases were partly offset by falls in the prices received for petroleum, petroleum products and related materials (-6.4%), sugars, sugar preparations and honey (-14.9%), non-ferrous metals (-2.2%) and professional, scientific and controlling instruments and apparatus, n.e.s. (-9.3%).

Through the year to September quarter 2010, the Export Price Index increased by 27.7%. This increase was driven mainly by rises in the prices received for metalliferous ores and metal scrap (+70.1%), coal, coke and briquettes (+33.6%), gas, natural and manufactured (+55.7%), gold, non-monetary (excluding gold, ores and concentrates) (+19.4%) and petroleum, petroleum products and related materials (+5.4%). Partly offsetting these through the year rises were decreases in the prices received for cereals and cereal preparations (-9.5%).

LIST OF TABLES

page

INTERNATIONAL TRADE PRICE INDEXES

1	Import price index: All groups, index numbers and percentage changes	5
2	Import price index: SITC contribution to all groups index	6
3	Import price index: Selected SITC sections	7
4	Import price index: Consumption goods, balance of payments broad economic categories	8
5	Import price index: Capital goods, balance of payments broad economic categories	9
6	Import price index: Intermediate and other merchandise goods, balance of payments broad economic categories	10
7	Export price index: All groups, index numbers and percentage changes	12
8	Export price index: SITC contribution to all groups index	13
9	Export price index: Selected SITC sections	14
10	Export price index: Rural goods, balance of payments classification of exports	15
11	Export price index: Non-rural goods, balance of payments classification of exports	16

ADDITIONAL TABLES AVAILABLE ON ABS WEBSITE

12	Import price index, by selected SITC division
13	Import price index, by selected HTISC section
14	Import price index, by selected ANZSIC industry of origin division
15	Import price index, by selected ANZSIC industry of origin subdivision
16	Import price index, by BEC category
17	Export price index, AHECC and ANZSIC contribution to all groups index
18	Export price index, by selected AHECC section
19	Export price index, by selected ANZSIC industry of origin division and subdivision

IMPORT PRICE INDEX(a): All groups, index numbers and percentage changes

<i>Period</i>	<i>Index numbers</i>	<i>% change from previous period</i>	<i>% change from corresponding quarter of previous year</i>
2006-07	115.7	-1.1	. .
2007-08	115.0	-0.6	. .
2008-09	129.7	12.8	. .
2009-10	117.7	-9.3	. .
2005			
December	115.7	0.4	2.3
2006			
March	117.2	1.3	6.2
June	119.9	2.3	6.8
September	119.5	-0.3	3.7
December	115.7	-3.2	0.0
2007			
March	113.7	-1.7	-3.0
June	113.8	0.1	-5.1
September	112.9	-0.8	-5.5
December	113.1	0.2	-2.2
2008			
March	116.2	2.7	2.2
June	117.8	1.4	3.5
September	123.7	5.0	9.6
December	137.0	10.8	21.1
2009			
March	133.2	-2.8	14.6
June	124.7	-6.4	5.9
September	120.9	-3.0	-2.3
December	115.7	-4.3	-15.5
2010			
March	116.0	0.3	-12.9
June	r118.3	r2.0	r-5.1
September	119.1	0.7	-1.5

. . not applicable

r revised

(a) Reference base of each index: 1989-90 = 100.0.

IMPORT PRICE INDEX(a): SITC contribution to all groups index

Category	CONTRIBUTION TO ALL GROUPS (INDEX POINTS)		CHANGE IN POINTS CONTRIBUTION
	Jun Qtr 2010(b)	Sep Qtr 2010	Jun Qtr 2010 to Sep Qtr 2010
ALL GROUPS			
All groups	r118.3	119.1	0.8
SITC SECTIONS			
0 Food and live animals	5.10	5.04	-0.06
1 Beverages and tobacco	1.01	1.01	0.00
2 Crude materials, inedible, except fuels	1.36	1.32	-0.04
3 Mineral fuels, lubricants and related materials	17.09	16.95	-0.14
4 Animal and vegetable oils, fats and waxes	0.28	0.29	0.01
5 Chemicals and related products, n.e.s.	13.03	13.22	0.19
6 Manufactured goods classified chiefly by material	13.15	13.59	0.44
7 Machinery and transport equipment	48.25	48.47	0.22
8 Miscellaneous manufactured articles	14.53	14.67	0.14
9 Commodities and transactions, n.e.s.	4.47	4.49	0.02
SELECTED SITC DIVISIONS			
03 Fish, crustaceans, molluscs and aquatic invertebrates and preparations thereof	0.77	0.72	-0.05
24 Cork and wood	0.38	0.37	-0.01
33 Petroleum, petroleum products and related materials	15.98	15.84	-0.14
51 Organic chemicals	1.81	1.85	0.04
52 Inorganic chemicals	0.56	0.66	0.10
59 Chemical materials and products, n.e.s.	1.15	1.18	0.03
64 Paper, paperboard and articles of paper pulp, of paper or of paperboard	1.55	1.56	0.01
65 Textile yarn, fabrics, made-up articles, n.e.s., and related products	1.48	1.55	0.07
69 Manufactures of metals, n.e.s.	2.84	2.86	0.02
71 Power generating machinery and equipment	2.57	2.63	0.06
72 Machinery specialised for particular industries	4.13	4.20	0.07
74 General industrial machinery and equipment, n.e.s., and machine parts, n.e.s.	6.49	6.57	0.08
75 Office machines and automatic data-processing machines	5.27	5.29	0.02
76 Telecommunications and sound-recording and reproducing apparatus and equipment	6.47	6.33	-0.14
77 Electrical machinery, etc. and parts thereof	5.72	5.80	0.08
78 Road vehicles (incl air-cushion vehicles)	14.64	14.67	0.03
79 Other transport equipment	2.59	2.62	0.03
87 Professional, scientific and controlling instruments and apparatus, n.e.s.	2.73	2.68	-0.05
89 Miscellaneous manufactured articles, n.e.s.	4.99	5.05	0.06

r revised

(b) Differs from previously published June quarter 2010 due to annual reweighting.

(a) Reference base of each index: 1989-90 = 100.0.

IMPORT PRICE INDEX(a): SITC sections

<i>Period</i>	<i>Food and live animals (0)</i>	<i>Beverages and tobacco (1)</i>	<i>Crude materials, inedible, except fuels (2)</i>	<i>Mineral fuels, lubricants and related materials (3)</i>	<i>Animal and vegetable oils, fats and waxes (4)</i>	<i>Chemicals and related products, n.e.s. (5)</i>	<i>Manufactured goods classified chiefly by material (6)</i>	<i>Machinery and transport equipment (7)</i>	<i>Miscellaneous manufactured articles (8)</i>	<i>Commodities and transactions, n.e.s. (9)</i>
2006-07	123.8	122.3	125.6	280.2	167.0	118.8	135.1	92.4	109.3	163.7
2007-08	126.2	122.8	138.8	353.7	197.8	120.7	130.0	85.2	101.1	185.1
2008-09	147.1	131.6	174.1	332.7	245.0	142.4	151.8	95.4	122.5	241.0
2009-10	134.2	132.9	r130.3	297.2	178.5	124.7	136.4	87.2	107.6	253.3
2005										
December	125.6	133.9	120.6	270.1	156.7	118.3	124.8	95.5	111.7	132.0
2006										
March	126.3	132.8	122.2	289.2	164.2	117.3	127.0	95.3	113.4	151.2
June	126.8	129.8	124.4	323.7	181.7	117.9	132.0	95.2	113.2	169.3
September	125.3	120.6	127.6	320.5	174.5	118.7	136.1	94.4	111.5	164.6
December	124.5	124.8	127.2	266.5	165.7	118.0	136.5	93.2	110.9	161.2
2007										
March	124.7	123.9	123.2	250.8	164.8	117.2	134.9	92.0	109.2	167.0
June	120.6	120.0	124.5	282.9	162.9	121.4	132.7	89.8	105.7	161.9
September	124.6	121.8	131.4	290.6	176.1	120.6	132.0	87.5	104.0	162.2
December	122.0	122.5	131.3	330.9	178.0	119.1	129.0	85.3	100.6	178.6
2008										
March	128.8	123.7	139.9	367.4	209.6	120.4	129.4	85.1	101.3	207.0
June	129.3	123.3	152.6	425.9	227.6	122.8	129.5	82.7	98.6	192.4
September	131.9	126.8	171.3	477.3	228.3	134.7	135.8	83.6	102.0	198.3
December	158.4	128.4	223.0	356.8	260.0	157.5	160.1	98.8	129.7	240.5
2009										
March	151.5	136.6	175.6	241.0	264.8	143.5	163.3	102.6	136.3	278.2
June	146.7	134.5	126.4	255.7	226.9	134.0	147.8	96.6	121.9	247.0
September	137.4	134.4	r123.7	294.3	195.4	128.8	141.4	91.0	113.5	234.8
December	128.8	133.7	r123.8	292.9	184.5	124.0	132.7	86.0	105.3	247.3
2010										
March	133.7	132.9	r129.9	291.4	174.0	121.3	134.5	86.4	105.1	252.2
June	136.7	130.7	r143.8	310.3	160.2	124.5	137.0	85.5	106.6	278.9
September	135.1	130.8	139.4	307.9	168.1	126.3	141.6	85.9	107.6	280.2

r revised

(a) Reference base of each index: 1989-90 = 100.0.

IMPORT PRICE INDEX(a): Consumption goods

BALANCE OF PAYMENTS BROAD ECONOMIC CATEGORIES - CONSUMPTION GOODS

	Consumption goods total	<i>Food and beverages, mainly for consumption</i>	<i>Household electrical items</i>	<i>Non-industrial transport equipment</i>	<i>Textiles, clothing and footwear</i>	<i>Toys, books and leisure goods</i>	<i>Consumption goods, n.e.s.</i>
2006-07	116.5	130.3	75.3	146.0	102.7	114.2	113.0
2007-08	112.6	131.5	65.9	143.8	96.1	103.8	110.0
2008-09	126.9	150.4	72.1	151.1	119.8	124.0	122.4
2009-10	118.0	138.9	63.8	149.8	104.2	108.2	115.2
2005							
December	118.7	134.7	83.3	147.7	103.7	119.4	112.6
2006							
March	119.0	135.6	81.5	147.0	105.6	119.6	113.2
June	119.2	136.0	79.9	148.0	105.3	120.3	113.7
September	118.1	132.3	77.7	147.0	106.3	116.9	113.3
December	116.9	131.1	75.5	145.4	104.3	115.2	113.2
2007							
March	116.3	130.9	75.1	146.0	101.6	114.6	112.6
June	114.5	126.7	72.7	145.4	98.5	110.0	113.0
September	113.4	130.2	69.9	142.7	98.5	107.7	112.5
December	112.0	127.8	66.7	142.5	96.4	103.8	110.4
2008							
March	113.1	134.0	64.9	145.6	96.6	104.4	109.0
June	111.8	133.9	62.2	144.4	93.0	99.4	108.2
September	114.1	136.5	65.6	143.9	97.8	103.5	110.2
December	131.4	159.4	74.6	150.1	126.5	132.6	127.5
2009							
March	134.8	155.6	76.3	155.9	134.4	137.4	130.1
June	127.3	150.0	71.8	154.4	120.3	122.6	121.7
September	121.3	142.2	67.5	152.3	110.5	112.7	116.7
December	115.6	134.7	62.8	149.4	100.9	104.6	112.7
2010							
March	117.1	138.2	62.9	150.0	100.8	107.7	114.8
June	117.8	140.4	61.8	147.4	104.4	107.7	116.4
September	117.7	138.3	59.6	145.8	108.1	108.9	117.1

(a) Reference base of each index: 1989-90 = 100.0.

IMPORT PRICE INDEX(a): **Capital goods**

BALANCE OF PAYMENTS BROAD ECONOMIC CATEGORIES - CAPITAL GOODS

<i>Period</i>	Capital goods total	<i>Machinery and industrial equipment</i>	<i>ADP equipment</i>	<i>Telecommuni- cations equipment</i>	<i>Civil aircraft</i>	<i>Industrial transport equipment, n.e.s.</i>	<i>Capital goods, n.e.s.</i>
2006-07	90.0	129.2	16.9	35.3	146.0	156.1	115.4
2007-08	83.0	123.8	13.3	30.1	132.2	152.4	108.4
2008-09	95.5	148.6	14.3	32.5	168.4	166.8	122.4
2009-10	85.3	135.5	11.8	27.7	143.4	161.0	112.8
2005							
December	94.4	128.7	20.3	39.8	144.6	161.1	122.4
2006							
March	93.5	129.6	19.6	38.2	147.0	158.1	120.9
June	93.4	131.6	18.8	38.2	148.4	157.2	119.5
September	92.1	129.9	18.3	36.5	149.2	159.0	117.8
December	91.1	130.2	17.4	36.0	148.3	156.5	117.8
2007							
March	89.5	128.7	16.6	35.0	146.2	154.8	114.3
June	87.4	127.9	15.4	33.5	140.4	154.2	111.7
September	85.3	125.4	14.6	31.5	137.0	153.6	111.4
December	83.3	124.8	13.4	29.9	131.8	154.2	107.8
2008							
March	82.7	123.1	13.0	30.2	132.4	153.3	107.7
June	80.6	121.8	12.0	28.7	127.6	148.5	106.8
September	81.2	124.6	12.0	28.6	132.1	150.5	101.9
December	100.0	154.5	15.4	35.0	177.5	168.4	128.3
2009							
March	104.1	162.8	15.6	34.8	190.6	177.9	134.9
June	96.5	152.5	14.0	31.7	173.4	170.3	124.5
September	89.8	140.5	12.7	29.3	152.2	168.5	120.8
December	83.9	133.4	11.5	27.3	138.0	158.4	111.8
2010							
March	84.2	135.0	11.5	27.2	140.6	162.1	107.8
June	83.4	133.0	11.4	26.9	142.6	154.9	110.6
September	84.3	135.7	11.4	27.1	143.8	160.1	108.8

(a) Reference base of each index: 1989-90 = 100.0.

IMPORT PRICE INDEX(a): Intermediate and other merchandise goods

BALANCE OF PAYMENTS BROAD ECONOMIC CATEGORIES - INTERMEDIATE AND OTHER MERCHANDISE GOODS

Period	Intermediate and other merchandise goods total	Intermediate and other goods total excluding non- monetary gold	Food and beverages, mainly for industry	Primary industrial supplies, n.e.s.	Fuels and lubricants	Parts for transport equipment	Parts for ADP machinery	Other parts for capital equipment	Organic and inorganic chemicals
2006-07	129.2	129.2	130.1	125.6	331.8	132.1	13.5	86.5	115.1
2007-08	136.2	135.6	162.1	143.1	420.2	123.7	10.6	80.1	122.8
2008-09	152.2	149.8	207.5	190.2	388.9	143.1	11.5	92.0	161.4
2009-10	136.9	132.5	177.1	r133.7	349.7	134.3	9.1	85.2	129.9
2005									
December	124.6	124.8	119.6	121.5	319.6	127.6	16.2	87.2	114.9
2006									
March	128.6	128.5	121.6	122.4	343.0	131.1	15.6	87.7	113.3
June	135.0	134.8	124.7	125.5	384.5	131.9	15.0	87.9	114.5
September	135.6	135.6	124.8	130.1	380.5	133.4	14.6	88.2	115.3
December	128.1	128.0	128.6	129.8	315.1	133.0	13.9	87.3	112.6
2007									
March	124.9	124.8	133.4	121.7	296.3	132.8	13.2	86.4	112.1
June	128.2	128.2	133.7	120.9	335.3	129.1	12.2	84.2	120.3
September	128.5	128.1	145.1	130.4	344.7	126.0	11.6	82.6	120.6
December	131.7	131.2	148.4	133.4	393.7	122.1	10.7	80.1	119.3
2008									
March	138.9	137.5	169.8	144.1	435.6	124.8	10.4	79.6	124.9
June	145.6	145.6	185.2	164.3	506.8	121.7	9.5	77.9	126.3
September	157.7	158.3	191.6	188.9	563.4	124.8	9.6	79.3	153.5
December	163.4	161.9	229.0	250.3	413.5	148.2	12.5	95.7	173.0
2009									
March	148.6	143.7	210.0	188.0	279.8	154.6	12.8	99.4	169.3
June	139.1	135.3	199.2	133.5	299.0	144.8	11.2	93.4	149.8
September	138.8	135.9	181.2	r131.8	345.8	137.3	9.9	89.1	146.3
December	134.6	130.4	174.1	r127.8	345.2	130.8	8.8	84.3	138.4
2010									
March	r 134.3	129.7	177.6	r131.5	342.8	132.9	8.8	83.6	118.5
June	139.7	r133.9	r175.5	r143.5	364.8	136.2	8.8	83.6	116.3
September	141.1	135.3	185.7	135.1	359.4	136.9	8.8	84.0	123.4

r revised

(a) Reference base of each index: 1989-90 = 100.0.

BALANCE OF PAYMENTS BROAD ECONOMIC CATEGORIES -

INTERMEDIATE AND OTHER MERCHANDISE GOODS *continued*

<i>Period</i>	<i>Paper and paperboard</i>	<i>Textile yarn and fabric</i>	<i>Iron and steel</i>	<i>Plastics</i>	<i>Processed industrial supplies, n.e.s.</i>	<i>Non- monetary gold</i>
2006-07	95.1	106.2	158.6	132.2	141.9	163.9
2007-08	91.4	102.1	159.6	125.2	136.6	185.2
2008-09	98.2	122.5	201.8	161.8	163.3	241.3
2009-10	88.3	104.6	166.3	145.9	r139.0	253.6
2005						
December	94.6	106.4	143.6	127.1	131.7	132.2
2006						
March	93.6	106.9	140.7	131.1	135.4	151.4
June	93.9	107.0	145.7	130.6	141.2	169.5
September	94.4	107.1	152.5	134.2	143.7	164.8
December	95.5	107.4	158.1	134.6	143.7	161.4
2007						
March	96.5	105.0	164.3	130.2	140.5	167.2
June	94.1	105.2	159.6	129.9	139.6	162.0
September	92.6	102.8	165.6	128.1	136.2	162.3
December	92.7	101.3	158.5	123.3	132.8	178.8
2008						
March	90.3	102.4	155.5	124.3	137.6	207.2
June	89.9	101.8	158.7	124.9	139.9	192.6
September	93.3	106.7	178.0	135.9	150.9	198.5
December	97.4	132.3	227.6	180.5	182.1	240.7
2009						
March	102.6	131.9	226.5	173.2	166.5	278.5
June	99.3	119.2	174.9	157.7	153.5	247.3
September	92.6	106.9	175.4	147.3	143.9	235.1
December	88.1	100.4	158.6	141.8	135.7	247.5
2010						
March	87.4	103.1	164.0	142.4	136.4	252.5
June	85.1	108.0	167.1	152.1	r139.8	279.1
September	85.7	113.7	183.5	151.2	143.8	280.5

r revised

(a) Reference base of each index: 1989-90 = 100.0.

EXPORT PRICE INDEX (a): All groups, index numbers and percentage changes

<i>Period</i>	<i>Index numbers</i>	<i>% change from previous period</i>	<i>% change from corresponding quarter of previous year</i>
2006–07	146.8	7.9	..
2007–08	149.6	1.9	..
2008–09	196.5	31.4	..
2009–10	157.6	–19.8	..
2005			
December	132.1	2.2	16.3
2006			
March	138.7	5.0	22.7
June	143.7	3.6	16.4
September	146.4	1.9	13.2
December	146.7	0.2	11.1
2007			
March	146.7	0.0	5.8
June	147.2	0.3	2.4
September	142.8	–3.0	–2.5
December	142.0	–0.6	–3.2
2008			
March	146.9	3.5	0.1
June	166.8	13.5	13.3
September	189.8	13.8	32.9
December	219.9	15.9	54.9
2009			
March	209.8	–4.6	42.8
June	166.5	–20.6	–0.2
September	150.5	–9.6	–20.7
December	148.0	–1.7	–32.7
2010			
March	153.6	3.8	–26.8
June	178.3	16.1	7.1
September	192.2	7.8	27.7

.. not applicable

(a) Reference base of each index: 1989–90 = 100.0.

EXPORT PRICE INDEX: (a): SITC contribution to all groups index

Category	CONTRIBUTION TO ALL GROUPS (INDEX POINTS)		CHANGE IN POINTS CONTRIBUTION
	Jun Qtr 2010(b)	Sep Qtr 2010	Jun Qtr 2010 to Sep Qtr 2010
ALL GROUPS			
All groups	178.3	192.2	13.9
SITC SECTIONS			
0 Food and live animals	18.65	18.86	0.21
1 Beverages and tobacco	2.21	2.15	-0.06
2 Crude materials, inedible, except fuels	53.45	60.50	7.05
3 Mineral fuels, lubricants and related materials	50.65	57.41	6.76
4 Animal and vegetable oils, fats and waxes	0.46	0.49	0.03
5 Chemicals and related products, n.e.s.	7.16	7.37	0.21
6 Manufactured goods classified chiefly by material	14.32	14.19	-0.13
7 Machinery and transport equipment	11.34	11.23	-0.11
8 Miscellaneous manufactured articles	4.31	4.13	-0.18
9 Commodities and transactions, n.e.s.	15.74	15.90	0.16
SELECTED SITC DIVISIONS			
00 Live animals other than animals of division 03	0.95	0.99	0.04
01 Meat and meat preparations	5.59	5.80	0.21
02 Dairy products and birds' eggs	1.85	1.92	0.07
03 Fish, crustaceans, molluscs and aquatic invertebrates and preparations thereof	0.83	0.89	0.06
04 Cereals and cereal preparations	4.69	4.76	0.07
05 Vegetables and fruit	1.36	1.36	—
11 Beverages	2.10	2.05	-0.05
21 Hides, skins and furskins, raw	0.51	0.52	0.01
26 Textile fibres and their wastes	2.24	2.20	-0.04
28 Metalliferous ores and metal scrap	48.06	55.06	7.00
32 Coal, coke and briquettes	35.28	41.41	6.13
33 Petroleum, petroleum products and related materials	8.02	7.51	-0.51
52 Inorganic chemicals	0.50	0.47	-0.03
54 Medical and pharmaceutical products	3.67	3.67	0.00
61 Leather, leather manufactures, n.e.s., and dressed furskins	0.23	0.21	-0.02
67 Iron and steel	1.76	1.84	0.08
68 Non-ferrous metals	9.43	9.22	-0.21
71-75 Power generating, general industrial and other specialised machinery and equipment	4.85	4.84	-0.01
76-77 Telecommunications equipment, sound recording apparatus and electrical machinery, n.e.s.	2.28	2.26	-0.02
78 Road vehicles (incl. air-cushion vehicles)	2.75	2.70	-0.05
79 Other transport equipment	1.45	1.43	-0.02
89 Miscellaneous manufactured articles, n.e.s.	1.78	1.76	-0.02

— nil or rounded to zero (including null cells)

(b) Differs from previously published June quarter 2010 due to annual reweighting.

(a) Base of each index: 1989-90 = 100.0.

EXPORT PRICE INDEX(a): SITC sections

Period	Food and live animals (0)	Beverages and tobacco (1)	Crude materials, inedible, except fuels (2)	Mineral fuels, lubricants and related materials (3)	Animal and vegetable oils, fats and waxes (4)	Chemicals and related products, n.e.s. (5)	Manufactured goods classified chiefly by material (6)	Machinery and transport equipment (7)	Miscellaneous manufactured articles (8)	Commodities and transactions, n.e.s. (9)
2006-07	117.3	119.0	147.3	229.5	136.8	125.5	187.0	88.7	94.7	163.8
2007-08	132.5	105.0	148.0	250.1	200.1	115.2	170.1	85.1	87.3	181.7
2008-09	162.6	101.9	178.6	492.3	156.0	128.0	142.2	96.8	96.9	238.0
2009-10	143.2	90.2	144.7	305.0	162.9	120.0	131.9	87.8	87.0	244.7
2005										
December	110.2	126.5	118.0	250.9	108.9	115.3	127.3	89.7	94.0	135.9
2006										
March	112.8	127.2	124.2	259.0	112.1	120.7	144.1	90.3	95.1	152.2
June	116.3	119.3	126.3	257.7	105.5	128.6	164.6	90.2	95.7	167.3
September	113.3	119.3	140.8	247.5	106.1	128.9	178.6	88.9	96.0	164.4
December	117.9	119.6	144.4	233.5	137.8	126.2	185.8	89.3	95.5	161.9
2007										
March	120.6	119.6	148.0	222.3	137.9	126.1	186.1	89.1	94.8	166.3
June	117.4	117.4	155.8	214.7	165.4	120.9	197.4	87.5	92.5	162.5
September	117.3	111.9	146.3	216.4	184.8	119.1	179.2	87.3	89.8	161.7
December	121.4	102.0	138.7	230.4	204.2	113.3	167.0	85.1	87.7	174.9
2008										
March	140.0	104.5	139.0	235.6	220.8	111.3	165.2	85.1	87.1	198.9
June	151.3	101.5	168.0	318.1	190.5	117.2	169.0	83.0	84.6	191.4
September	160.4	97.3	179.5	453.0	184.4	122.0	166.3	87.1	90.1	199.1
December	181.0	103.9	205.0	569.3	108.1	134.1	161.3	102.1	102.2	240.1
2009										
March	162.5	105.8	185.1	571.7	136.0	131.4	124.4	102.8	101.3	272.8
June	146.5	100.4	144.9	375.1	195.5	124.5	116.6	95.3	93.8	239.8
September	143.6	91.8	129.8	293.3	164.6	119.5	126.7	90.0	91.4	227.0
December	136.1	89.6	127.9	287.9	168.7	117.8	125.0	86.4	86.4	239.7
2010										
March	144.7	89.6	135.5	295.0	148.8	120.1	134.0	86.8	83.7	242.5
June	148.5	89.7	185.4	343.9	169.3	122.5	141.8	87.8	86.5	269.7
September	150.1	87.6	209.8	389.9	180.0	126.1	140.5	86.9	82.9	272.4

(a) Reference base of each index: 1989-90 = 100.0.

BALANCE OF PAYMENTS CLASSIFICATION OF EXPORTS

<i>Period</i>	<i>Rural goods total</i>	<i>Meat and meat preparations</i>	<i>Cereal grains and cereal preparations</i>	<i>Wool and sheepskins</i>	<i>Other rural</i>
2006–07	102.4	134.2	100.2	72.1	124.5
2007–08	118.2	140.3	142.6	81.9	137.3
2008–09	135.6	178.5	182.3	69.8	149.8
2009–10	120.5	161.5	133.1	74.6	138.4
2005					
December	97.1	135.5	87.7	60.6	121.6
2006					
March	97.2	133.7	89.9	60.2	121.7
June	98.1	135.7	89.5	66.2	121.0
September	96.3	131.2	86.6	65.6	120.3
December	101.0	137.9	96.9	66.0	123.4
2007					
March	106.2	138.7	108.7	76.3	125.8
June	105.9	129.1	108.7	80.4	128.3
September	106.7	127.8	112.4	80.6	128.9
December	110.1	126.0	125.3	81.2	132.2
2008					
March	124.4	142.0	159.0	85.7	143.2
June	131.5	165.4	173.7	80.1	144.8
September	137.4	186.2	175.9	76.7	149.4
December	149.1	199.7	206.7	72.3	162.8
2009					
March	133.5	171.2	184.5	65.4	149.7
June	122.2	156.7	162.0	64.6	137.4
September	120.2	162.5	143.9	66.7	136.2
December	115.4	151.8	131.8	71.2	132.3
2010					
March	121.2	161.5	128.4	81.2	139.4
June	125.1	170.3	128.4	79.4	145.8
September	128.0	176.9	130.2	79.4	149.1

(a) Reference base of each index: 1989–90 = 100.0.

BALANCE OF PAYMENTS CLASSIFICATION OF EXPORTS

<i>Period</i>	<i>Non-rural goods total (excl. non- monetary gold)</i>	<i>Metal ores and minerals</i>	<i>Coal, coke and briquettes</i>	<i>Other mineral fuels</i>	<i>Metals (excl. non- monetary gold)</i>	<i>Machinery</i>	<i>Transport equipment</i>	<i>Other manufactures</i>	<i>Other non- rural</i>	<i>Non- monetary gold</i>
2006-07	165.6	196.3	174.7	360.6	211.2	79.8	109.1	109.1	85.2	166.2
2007-08	162.9	188.7	166.5	466.0	189.4	77.7	102.6	105.2	74.9	187.8
2008-09	219.2	231.9	441.3	522.2	151.6	87.7	118.0	112.5	89.2	244.4
2009-10	168.1	182.3	223.0	431.6	140.6	80.2	105.3	103.8	84.6	257.4
2005										
December	148.3	150.5	211.7	329.5	132.5	79.6	112.5	110.6	79.6	133.9
2006										
March	156.6	165.1	213.2	356.5	154.4	80.4	112.7	108.5	85.0	153.5
June	162.2	171.5	202.8	383.7	180.8	81.3	110.6	109.8	91.0	172.2
September	167.1	191.1	189.2	386.2	199.2	79.7	109.8	111.1	88.8	167.2
December	166.2	194.8	178.5	364.2	210.2	80.1	110.3	109.1	86.6	163.7
2007										
March	163.9	196.3	171.0	343.7	210.2	80.1	109.6	108.6	84.4	169.6
June	165.2	203.1	160.1	348.2	225.0	79.3	106.5	107.6	81.1	164.4
September	158.5	189.9	155.6	368.0	201.3	79.3	106.0	106.2	75.6	164.6
December	155.0	175.8	146.1	451.2	185.6	77.3	103.4	105.8	71.6	181.3
2008										
March	155.2	173.6	143.3	479.8	182.5	77.7	102.3	105.0	74.2	210.0
June	182.7	215.6	220.9	565.0	188.2	76.3	98.8	103.8	78.2	195.3
September	212.6	232.2	374.9	590.9	184.2	80.8	102.0	108.0	80.7	200.9
December	248.3	268.9	511.7	598.9	172.8	91.9	125.5	119.8	93.6	243.7
2009										
March	235.4	242.1	538.4	514.6	127.3	92.2	127.1	115.3	95.6	282.3
June	180.5	184.5	340.2	384.2	121.9	85.7	117.3	106.7	86.7	250.6
September	159.8	162.6	223.9	393.8	135.4	81.8	109.2	103.7	80.7	238.1
December	156.4	159.1	208.2	412.2	133.1	79.1	103.3	101.5	80.8	253.0
2010										
March	162.6	168.1	204.9	441.3	142.8	79.7	103.2	103.1	88.5	255.4
June	193.7	239.5	254.9	479.0	150.9	80.2	105.3	106.8	88.4	283.0
September	212.0	273.9	299.2	498.7	149.4	79.4	103.3	107.2	85.6	283.9

(a) Reference base of each index: 1989-90 = 100.0.

EXPLANATORY NOTES

INTRODUCTION

1 This publication contains indexes measuring changes in the prices paid for imports of merchandise that are landed in Australia each quarter and prices received for exports of merchandise that are shipped from Australia each quarter. The import price indexes are in tables 1–6 and the export price indexes are in tables 7–11.

2 The indexes are calculated on the reference base 1989–90=100.0.

SCOPE

3 The import price index excludes the following items (representing less than 5% of the value of merchandise imported during the weighting period) because of the inherent difficulties in pricing the items to constant quality (see paragraph 15 below)

- live animals (not for food)
- jewellery and other articles of precious metal, n.e.s.
- military equipment
- commodities not classified according to kind
- works of art, collectors' pieces, antiques
- railway vehicles
- ships of various types.

4 The export price index includes re-exports of merchandise (i.e. goods which are imported into Australia and exported at a later date without physical transformation).

CLASSIFICATIONS

5 Index numbers for selected sections of the Standard International Trade Classification (SITC) are provided in table 3 (import price index) and table 9 (export price index). The SITC (Revision 4) used from the September quarter 2008 onwards is the United Nations' updated version, replacing SITC (Revision 3). SITC (Revision 4) retains the overall structure of SITC (Revision 3) and consists of the same number of sections, divisions and groups. Changes to the classification labels and components were made at levels lower than those used in the Import and Export Prices Indexes. As a result, there has been no material impact on the indexes, which remain comparable across the changes in classification.

6 The import price index is also presented by Balance of Payments Broad Economic Categories in tables 4–6, which have been disaggregated into balance of payments groupings of consumption goods, capital goods and intermediate and other merchandise goods. From the September quarter 2008 onwards, the previous heading of Classification of Broad Economic Categories (BEC) End Use, has been replaced with Balance of Payments Broad Economic Categories. This is simply a name change, with the series remaining comparable to previously published series.

7 The export price index is also presented by balance of payments classification of exports groupings in tables 10 and 11.

ITEMS AND WEIGHTS

8 The import price index and export price index are annually reweighted chained Laspeyres indexes. This method of weighting was introduced in the September quarter 2000 and replaces the 'fixed-base' method of weighting in which the weighting patterns are updated infrequently (generally once every 5 or 10 years).

9 The annual reweighting and chaining process involves a number of steps in order to provide new weights each year. The current weighting basis for the import price index was derived from the average value of import items during 2009–10. This differs slightly from the export price index which has used the average value of export items during 2008–09 and 2009–10, due to the greater volatility associated with the value of export items. These weights were revalued to reflect link period (June quarter 2010) price levels. This means, for example, that the weights for the import price index are effectively determined using quantities from 2009–10 and prices from June quarter 2010. Indexes derived by using the new weights for the September quarter 2010 were then linked to the already published June quarter 2010 (link period) levels which were derived using the previous series weights. Using this methodology, long-term chain

EXPLANATORY NOTES *continued*

ITEMS AND WEIGHTS *continued*

linked series can be constructed over time on a consistent reference base for continuity and user convenience, but using annually refreshed weights. The reference base for each index series continues to be 1989–90=100 even though the weights are being updated each year.

10 The commodities directly represented in each index (the index items) were selected on the basis of the significance of their import and export values in the period 2009–10 for imports and 2008–09 and 2009–10 for exports. All significant commodities were selected for pricing. The weights for minor commodities which are not directly priced are included with those of comparable directly priced items where prices are likely to move in a similar way.

PRICE MEASUREMENT

11 In general, prices of individual shipments are obtained from major importers and exporters of the selected items and relate to the quarter in which the imported goods physically arrive in Australia and the exported goods physically leave Australia.

12 Imports are priced on a 'free on board' (f.o.b.), country of origin basis. Therefore freight and insurance charges involved in shipping goods from foreign to Australian ports are excluded from the prices used in the index, as are Australian import duties and taxes. Similarly, exports are priced on a f.o.b. basis at the main Australian ports of export. Exports are exempt from taxes on products.

13 As the prices used in the indexes are expressed in Australian currency, changes in the relative value of the Australian dollar and overseas currencies can have a direct impact on price movements for the many commodities that are bought and sold in currencies other than Australian dollars. Prices reported in a foreign currency are converted to Australian dollars using relevant exchange rates. Where imports or exports are transacted in prices expressed in terms of a foreign currency and forward exchange cover is used, the prices in the indexes exclude the forward exchange cover. As noted, imports are priced on a country of origin basis. Therefore the exchange rates applied are impacted by the differences between the date of transaction (ownership change) and the shipping time from the country of origin to Australia.

14 The main pricing methodology used is specification pricing, under which a manageable sample of precisely specified products is selected, in consultation with each reporting business, for repeat pricing. In specifying the products, care is taken to ensure that they are fully defined in terms of all the characteristics which influence their transaction prices. As such, all the relevant technical characteristics need to be described (e.g. make, model, features) along with the unit of sale, type of packaging, conditions of sale (e.g. delivered, payment within 30 days), etc. The goods are also specified by country and market in order to lessen the impact of price variations attributable solely to changes over time in the mix of countries, or markets.

15 When the quality or specifications of an item being priced change over time, adjustments are made to the reported prices so that the index captures only pure price change. That is, any element of price change attributable to a change in quality is removed. If there is an increase (decrease) in the quality of an item, then the price index is adjusted downwards (upwards) to reflect the 'worth' of the quality change. This technique is known as pricing to constant quality.

16 Wherever possible, prices from volume selling products being traded with predominant countries, or markets, are obtained to ensure specifications have a good chance of being re-priced over time and index series are representative of overall price movements. Individual product weights and weights between markets and countries are regularly reviewed to keep the indexes up to date.

EXPLANATORY NOTES *continued*

DIFFERENCES BETWEEN EPI AND EXPORT IPD

17 There are differences between the export price index (EPI) presented in this publication, and the export implicit price deflator (IPD) presented in *National Income, Expenditure and Product* (cat. no. 5206.0) and *Balance of Payments and International Investment Position* (cat. no. 5302.0). The differences are mainly due to the completeness of the dataset used and the source of the data. Complete data for the third month of the quarter are not available for some components of the EPI due to the timing of its release. Further, the EPI is calculated from predominantly sampled provider data, whereas the export IPD is calculated from predominantly international merchandise trade data supplied by Customs. These differences can result in significant divergences between the measures when prices of commodities, which form a large proportion of exports, are volatile.

INDEX NUMBERS

18 Index numbers for financial years are simple averages of the relevant quarterly index numbers.

ANALYSIS OF INDEX CHANGES

19 Care should be exercised when interpreting quarter-to-quarter movements in the indexes as short-term movements do not necessarily indicate changes in trend.

20 Movements in indexes from one period to another can be expressed either as changes in 'index points' or as percentage changes. The following example illustrates the method of calculating index points changes and percentage changes between any two periods:

Export price index, All groups index number:

December quarter 2009	148.0 (see table 7)
less December quarter 2008	219.9 (see table 7)
Change in index points	-71.9
Percentage change	$-71.9/219.9 \times 100 = -32.7\%$

21 Tables 2 and 8 provide analyses of the contribution which SITC sections and divisions make to the All groups import price index and export price index, respectively. For example, exports of mineral fuels, lubricants and related materials contributed 36.54 index points to the All groups export price index number of 148.0 for December quarter 2009 and -0.69 index points to the net change of -2.5 index points between September 2009 and December 2009 quarters.

FURTHER INFORMATION

22 For further information on price indexes in the ABS refer to the following publications:

Information Paper: Producer and International Trade Price Indexes; Concepts, Sources and Methods 2006, (cat. no. 6429.0)

Information Paper: An Analytical Framework for Price Indexes in Australia, (cat. no. 6421.0)

Information Paper: Producer Price Index Developments, (cat. no. 6422.0)

Information Paper: Review of the Import Price Index and Export Price Index, Australia, (cat. no. 6424.0)

Information Paper: Price Indexes and The New Tax System, (cat. no. 6425.0)

Information Paper: Changes to the Weights of the Price Indexes for the Output of the General Construction Industry, Australia, (cat. no. 6406.0)

Information Paper: Update on ANZSIC 2006 Implementation for Producer and International Trade Price Indexes, Australia, 2009, (cat. no. 6427.0.55.002)

RELATED PUBLICATIONS

23 Users may also wish to refer to the following related publications, which are

EXPLANATORY NOTES *continued*

RELATED PUBLICATIONS

continued

available from the ABS website:

Producer Price Indexes, Australia, (cat. no. 6427.0)

Consumer Price Index, Australia, (cat. no. 6401.0)

Labour Price Index, Australia, (cat. no. 6345.0)

Australian National Accounts, Input–Output Tables, (cat. no. 5209.0)

Balance of Payments and International Investment Position, Australia,
(cat. no. 5302.0)

24 Current publications and other products released by the ABS are listed on the ABS website <<http://www.abs.gov.au>>. The ABS also issues a daily *Release Advice* on the website which details products to be released in the week ahead.

APPENDIX INDEX STRUCTURES AND WEIGHTING PATTERNS

COMPOSITION

Both the Import Price Index and the Export Price Index have been reweighted in the September quarter 2010. It is ABS practice to reweight these indexes annually each September quarter, as explained in paragraphs 8–10 of the Explanatory Notes. The new weighting patterns for both the Import Price Index and Export Price Index, based on the Standard International Trade Classification (SITC) (Revision 4), are presented in this Appendix.

All SITC sections and divisions are included in the reweighted index structure for completeness. However, indexes for some of the lower weighted SITC sections and divisions are not constructed separately and so are not available for publication.

Corresponding new weighting patterns based on classification by Broad Economic Categories (BEC), Harmonized Tariff Item Statistical Classification (HTSIC) and Australian and New Zealand Standard Industrial Classification (ANZSIC) for the Import Price Index and Australian Harmonised Export Commodity Classification (AHECC) and ANZSIC for the Export Price Index can be made available on request.

APPENDIX INDEX STRUCTURES AND WEIGHTING PATTERNS *continued*

IMPORT PRICE INDEX GROUPED BY SITC (REVISION 4)(a)(b)

SITC	Divisions & Sections to to All Sections Groups 2010 2010	
	Divisions to Sections 2010	Sections to All Groups 2010
0 Food and live animals	100.00	4.31
01 Meat and meat preparations	6.72	0.29
02 Dairy products and birds' eggs	8.83	0.38
03 Fish (not marine mammals), crustaceans, molluscs and aquatic invertebrates, and preparations thereof	15.10	0.65
04 Cereals and cereal preparations	8.63	0.37
05 Vegetables and fruit	17.79	0.77
06 Sugars, sugar preparations and honey	3.50	0.15
07 Coffee, tea, cocoa, spices, and manufactures thereof	13.73	0.59
08 Feeding stuff for animals (excluding unmilled cereals)	7.11	0.31
09 Miscellaneous edible products and preparations	18.58	0.80
1 Beverages and tobacco	100.00	0.85
11 Beverages	85.02	0.72
12 Tobacco and tobacco manufactures	14.98	0.13
2 Crude materials, inedible, except fuels	100.00	1.17
21 Hides, skins and furskins, raw	0.05	0.01
22 Oil seeds and oleaginous fruits	2.34	0.03
23 Crude rubber (including synthetic and reclaimed)	7.50	0.09
24 Cork and wood	27.67	0.31
25 Pulp and waste paper	9.55	0.11
26 Textile fibres (other than wool tops) and their wastes (not manufactured into yarn or fabric)	6.11	0.07
27 Crude fertilisers other than those of division 56, and crude minerals (excluding coal, petroleum and precious stones)	7.44	0.09
28 Metalliferous ores and metal scrap	24.04	0.28
29 Crude animal and vegetable materials, n.e.s.	15.30	0.18
3 Mineral fuels, lubricants and related materials	100.00	14.44
32 Coal, coke and briquettes	0.10	0.01
33 Petroleum, petroleum products and related materials	93.49	13.51
34 Gas, natural and manufactured	6.40	0.92
4 Animal and vegetable oils, fats and waxes	100.00	0.23
41 Animal oils and fats	6.11	0.01
42 Fixed vegetable fats and oils, crude, refined or fractionated	81.44	0.19
43 Animal or vegetable fats and oils, processed; waxes of animal or vegetable origin; inedible mixtures or preparations, of animal or vegetable fats or oils, n.e.s.	12.45	0.03
5 Chemicals and related products, n.e.s.	100.00	11.02
51 Organic chemicals	13.85	1.53
52 Inorganic chemicals	4.27	0.47
53 Dyeing, tanning and colouring materials	2.75	0.30
54 Medicinal and pharmaceutical products	43.55	4.80
55 Essential oils and resinoids and perfume materials; toilet, polishing and cleansing preparations	8.04	0.89
56 Fertilisers (other than those of group 272)	5.24	0.58
57 Plastics in primary forms	7.12	0.78
58 Plastics in non-primary forms	6.34	0.70
59 Chemical materials and products, n.e.s.	8.84	0.97
6 Manufactured goods classified chiefly by material	100.00	11.11
61 Leather, leather manufactures, and dressed furskins	0.50	0.06
62 Rubber manufactures, n.e.s.	13.25	1.47
63 Cork and wood manufactures (excluding furniture)	2.99	0.33
64 Paper, paperboard, and articles of paper pulp, of paper or of paperboard	11.80	1.31
65 Textile yarn, fabrics, made-up articles, n.e.s., and related products	11.26	1.25
66 Non-metallic mineral manufactures, n.e.s.	11.85	1.32
67 Iron and steel	15.85	1.76
68 Non-ferrous metals	10.91	1.21
69 Manufactures of metals, n.e.s.	21.59	2.40
7 Machinery and transport equipment	100.00	40.81
71 Power generating machinery and equipment	5.34	2.18
72 Machinery specialised for particular industries	8.55	3.49
73 Metalworking machinery	0.76	0.31
74 General industrial machinery and equipment, n.e.s., and machine parts, n.e.s.	13.45	5.49
75 Office machines and automatic data processing machines	10.92	4.46

APPENDIX INDEX STRUCTURES AND WEIGHTING PATTERNS *continued*

IMPORT PRICE INDEX GROUPED BY SITC (REVISION 4)(a)(b) *continued*

SITC		Divisions & Sections to to All Sections Groups 2010 2010	
		Divisions to Sections 2010	Sections to All Groups 2010
76	Telecommunications and sound recording and reproducing apparatus and equipment	13.40	5.47
77	Electrical machinery, apparatus, appliances, n.e.s., and parts thereof (including non-electrical counterparts, n.e.s., of electrical household-type equipment)	11.86	4.84
78	Road vehicles (including air-cushion vehicles)	30.34	12.38
79	Other transport equipment	5.37	2.19
8	Miscellaneous manufactured articles	100.00	12.29
81	Prefabricated buildings; sanitary, plumbing, heating and lighting fixtures and fittings, n.e.s.	3.02	0.37
82	Furniture and parts thereof; bedding, mattresses, mattress supports, cushions and similar stuffed furnishings	10.42	1.28
83	Travel goods, handbags and similar containers	2.81	0.34
84	Articles of apparel and clothing accessories	20.00	2.46
85	Footwear	5.12	0.63
87	Professional, scientific and controlling instruments and apparatus, n.e.s.	18.79	2.31
88	Photographic apparatus, equipment and supplies and optical goods, n.e.s.; watches and clocks	5.50	0.68
89	Miscellaneous manufactured articles, n.e.s.	34.35	4.22
9	Commodities and transactions not classified elsewhere in the SITC	100.00	3.78
97	Gold, non-monetary (excluding gold, ores and concentrates)	100.00	3.78

(a) Standard International Trade Classification, Revision 4.

(b) Indexes for some lower weighted sections/divisions are not available for publication.

APPENDIX INDEX STRUCTURES AND WEIGHTING PATTERNS *continued*

EXPORT PRICE INDEX GROUPED BY SITC (REVISION 4)(a)(b)

SITC		Divisions & Sections to All to All Sections Groups 2010 2010	
		Division to Sections 2010	Sections to All Groups 2010
0	Food and live animals	100.00	10.46
00	Live animals other than animals of division 03	5.10	0.53
01	Meat and meat preparations	29.97	3.14
02	Dairy products and birds' eggs	9.91	1.04
03	Fish (not marine mammals), crustaceans and molluscs, and aquatic invertebrates and preparations thereof	4.43	0.46
04	Cereals and cereal preparations	25.16	2.63
05	Vegetables and fruit	7.27	0.76
06	Sugars, sugar preparations and honey	8.50	0.89
07	Coffee, tea, cocoa, spices and manufactures thereof	1.32	0.14
08	Feeding stuff for animals (not including unmilled cereals)	5.15	0.54
09	Miscellaneous edible products and preparations	3.17	0.33
1	Beverages and tobacco	100.00	1.24
11	Beverages	95.09	1.18
12	Tobacco and tobacco manufactures	4.91	0.06
2	Crude Materials, inedible, except fuels	100.00	29.98
21	Hides, skins and furskins, raw	0.95	0.28
22	Oil seeds and oleaginous fruits	0.86	0.26
23	Crude rubber (including synthetic and reclaimed)	0.02	0.01
24	Cork and wood	1.83	0.55
25	Pulp and waste paper	0.39	0.12
26	Textile fibres (other than wool tops and other combed wool) and their wastes (not manufactured into yarn or fabric)	4.19	1.26
27	Crude fertilisers, other than those of division 56, and crude minerals (excluding coal, petroleum and precious stones)	1.46	0.44
28	Metalliferous ores and metal scrap	89.90	26.95
29	Crude animal and vegetable materials, n.e.s.	0.39	0.12
3	Mineral fuels, lubricants and related materials	100.00	28.41
32	Coal, coke and briquettes	69.66	19.79
33	Petroleum, petroleum products and related materials	15.84	4.50
34	Gas, natural or manufactured	14.50	4.12
4	Animal and vegetable oils, fats and waxes	100.00	0.26
41	Animal oils and fats	64.44	0.17
42	Fixed vegetable fats and oils, crude, refined or fractionated	33.02	0.09
43	Animal or vegetable fats and oils, processed; waxes of animal or vegetable origin; inedible mixtures or preparations of animal or vegetable fats or oils, n.e.s.	2.54	0.01
5	Chemicals and related products, n.e.s.	100.00	4.02
51	Organic chemicals	2.00	0.08
52	Inorganic chemicals	6.94	0.28
53	Dyeing, tanning and colouring materials	7.78	0.31
54	Medicinal and pharmaceutical products	51.25	2.06
55	Essential oils and resinoids and perfume materials; toilet, polishing and cleaning preparations	7.66	0.31
56	Fertilisers (other than those of group 272)	4.31	0.17
57	Plastics in primary forms	4.42	0.18
58	Plastics in non-primary forms	4.43	0.18
59	Chemical materials and products, n.e.s.	11.22	0.45
6	Manufactured goods classified chiefly by material	100.00	8.03
61	Leather, leather manufactures, n.e.s., and dressed furskins	1.58	0.13
62	Rubber manufactures, n.e.s.	1.29	0.10
63	Cork and wood manufactures (excluding furniture)	0.89	0.07
64	Paper, paperboard and articles of paper pulp, of paper or of paperboard	4.15	0.33
65	Textile yarn, fabrics, made-up articles, n.e.s., and related products	1.80	0.14
66	Non-metallic mineral manufactures, n.e.s.	6.44	0.52
67	Iron and steel	12.26	0.98
68	Non-ferrous metals	65.83	5.29
69	Manufactures of metals, n.e.s.	5.77	0.46
7	Machinery and transport equipment	100.00	6.36
71-75	Industrial and office machinery	42.75	2.72
76-77	Telecommunications, sound and electrical equipment, n.e.s.	20.14	1.28
78	Road vehicles (including air-cushion vehicles)	24.29	1.55

APPENDIX INDEX STRUCTURES AND WEIGHTING PATTERNS *continued*

EXPORT PRICE INDEX GROUPED BY SITC (REVISION 4)(a)(b) *continued*

SITC		Divisions & Sections to All to All Sections Groups 2010 2010	
		Division to Sections 2010	Sections to All Groups 2010
79	Other transport equipment	12.82	0.82
8	Miscellaneous manufactured articles	100.00	2.42
81-82	Prefabricated buildings, building fittings and furniture	5.40	0.13
83	Travel goods, handbags and similar containers	0.64	0.02
84	Articles of apparel and clothing accessories	4.13	0.10
85	Footwear	0.97	0.02
87	Professional, scientific and controlling instruments and apparatus, n.e.s.	41.24	1.00
88	Photographic apparatus, equipment and supplies and optical goods, n.e.s.; watches and clocks	6.23	0.15
89	Miscellaneous manufactured articles, n.e.s.	41.39	1.00
9	Commodities and transactions not classified elsewhere in the SITC	100.00	8.83
93	Special transactions and commodities not classified according to kind	9.36	0.83
96	Coin (other than gold coin), not being legal tender	3.25	0.29
97	Gold, non-monetary (excluding gold ores and concentrates)	87.39	7.72

(a) Standard International Trade Classification, Revision 4.

(b) Indexes for some lower weighted sections/divisions are not available for publication.

FOR MORE INFORMATION . . .

INTERNET

www.abs.gov.au the ABS website is the best place for data from our publications and information about the ABS.

INFORMATION AND REFERRAL SERVICE

Our consultants can help you access the full range of information published by the ABS that is available free of charge from our website. Information tailored to your needs can also be requested as a 'user pays' service. Specialists are on hand to help you with analytical or methodological advice.

PHONE

1300 135 070

EMAIL

client.services@abs.gov.au

FAX

1300 135 211

POST

Client Services, ABS, GPO Box 796, Sydney NSW 2001

FREE ACCESS TO STATISTICS

All statistics on the ABS website can be downloaded free of charge.

WEB ADDRESS

www.abs.gov.au